

# Ultrasound System

## DUS - 9000







## 3D,4DVolumetric,S-Live **DUS -9000**

- High definition LCD color display with articulated arm
- Ergonomic second display touch screen
- Five active transducer ports
- Digital front-end technology
- Multi-beam forming technology
- Compound imaging
- $\mu$ -scan image processing
- Tissue harmonic imaging
- Phase-inversion harmonic imaging
- High pulse repetition frequency
- Panoramic imaging
- 3D/4D imaging, FreeHand 3D
- Exam-type icons
- Elastography Imaging
- Contrast imaging
- DVD / RV Burner
- ECG function Module
- $\mu$ -scan
- 5-band adjustable frequency in B mode
- Tissue characteristic index
- Modes: THI,PIH,Color,DPI,DPDI,PW,SteerM,ColorM,TDI,CW,B
- Dual beams
- Image rotation function
- Spatial compound imaging
- Trapezoidal imaging
- Capacity of Image and film
- Biopsy enhanced
- Stress Echo (optional)
- Measurement package: Basic, Obstetrics, Gynecology, Cardiology, Abdomen, Vascular, Urology, Small parts, Pediatrics, Myocardial performance index, Orthopedic
- PW auto trace
- IMT measurement
- A wide range of transducers is available
- DICOM: transmission, worklist, MPPS, Q/R, AVI/JPG, 6 USB, DVD, PDF format
- WIFI Connectivity
- Power Supply: AC 100~240 Volts 50/60 Hz.
- Meet ISO 13485 Quality Standard
- Two years warranty.



**2 YEARS**  
warranty

## DUS-9000

Ultrasound Digital System  
Outstanding performance  
in multiple applications

Cardiology

Gastroenterology

Radiology

Emergency

Anesthesia

Urology

Vascular

MSK

Ob/Gyn

Internal  
Medicine

Abdomen

Others

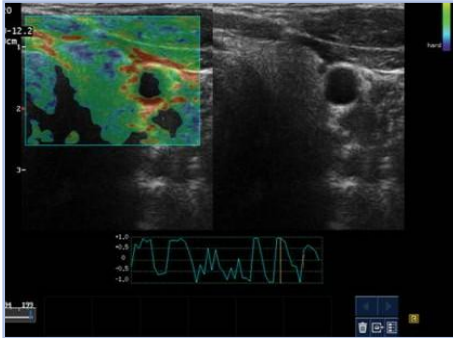


## UltrasoundDigitalSystem

**New cutting-edge 4D digital imaging technology**

The DUS - 9000 provides images of exceptional resolution and detail, adding wide range of services with shared capabilities such as vascular, abdominal , pediatric / fetal , OB and OR and other applications.

## Ultrasoundimages



Elastography



Trapezoidal Image



Panoramic View with Color



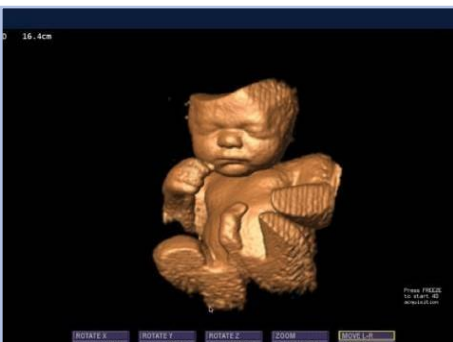
Fetus



Umbilical Artery



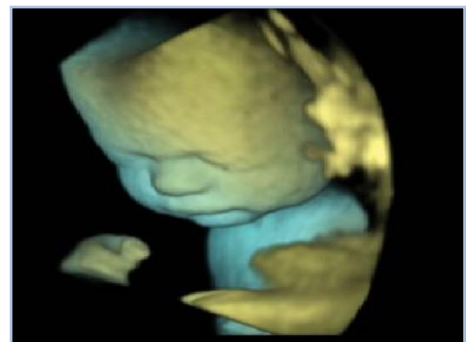
Kidney Power Flow



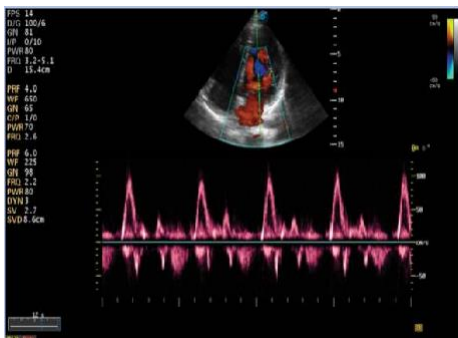
3D/4D



4D S-Live



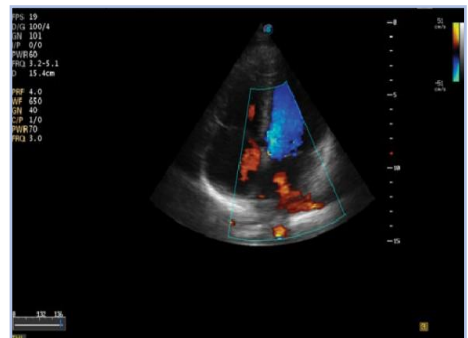
4D S-Depth



Aorta Spectral



Vascular



TDI

## Convex Transducer

Gain 0-255

- AI C322** 72 Elements Micro-Convex Array C322 (Abdominal Biopsy). Frequency 2.0-6.8MHz/ R20mm. Biopsy Guide.
- AI C353** 128 Elements Convex Array C353 (Abdominal, Obstetrics, Gynecology), 2.0-6.8MHz/ R55mm.
- AI 3C-A** 128 elements convex array 3C-A (Patients with difficult access and obese & abdominal obese, Obstetrics, Gynecology),1.0-7.0MHz/ R50mm.
- AI C611** 72 elements Micro-Convex Array C611 (Cardiology, Pediatrics), 4.0-13.0MHz/ R11mm.
- AI VC6-2** Volumetric convex array VC6-2 (Obstetrics, Abdominal,Gynecology), 2.0-6.8MHz/ R40mm. (4D)



## Linear Transducer

- AI L741** 128 elements Linear Array L741 (Vascular, Small Parts, MSK, Breast ) Frequency 5.0-12.0MHz/46mm). Biopsy Guide.
- AI L742** 192 elements Linear Array L742 (Vascular, Small parts, MSK, Breast )Frequency 5.0-16.0MHz/ 38mm). Biopsy Guide
- AI L743** 192 elements Linear Array L743 (Vascular, Small parts, MSK, Breast ), 4.0-16.0MHz/ 46mm) Biopsy Guide.
- AI L752** 256 elements Linear Array L752 (Vascular, Small parts, MSK , Breast ), 4.0-16.0MHz/ 52mm).
- AI 10I2** 96 elements linear array 10I2 (Intra- operative Application: Musculoskeletal, Small Parts, Nerve, Vascular, Surgery) 4.0-16.0MHz/ 25mm.



## Cardiological Transducer

- AI 4P-A** 64 elements phased array 4P-A (Adult Cardiac, Transcranial) Frequency 1.0-5.4MHz
- AI 5P2** 64 elements phased array 5P2 (Cardiac, Transcranial, Pediatric), Frequency 2.0-9.0MHz
- AI PWD 2.0** PWD 2.0 (Cardiac, Transcranial), 2.0MHz
- AI CWD 2.0** CWD 2.0 (Cardiac, Transcranial), 2.0MHz
- AI CWD 5.0** CWD 5.0 (Cardiac, Transcranial), 5.0MHz .



## Vaginal and Rectal Transducer

- AI 6V3** 192 elements endocavity 6V3 (Gynecology, Obstetrics, Urology), 3.0-15MHz/ R10mm.
- AI 6V7** 192 elements endocavity 6V7 (Gynecology, Obstetrics, Urology), 3.0-15MHz/ R10mm.
- AI EC9-5** 128 elements transrectal EC9-5 (Urology), 3.0-15.0MHz/ R8mm.
- AAI BCC9-5** 128/128 elements biplane BCC9-5 (Urology), 3.9-11.0MHz/ R10mm



## Transesophageal Transducer

- AI MPTEE** 64 elements transesophageal (Adult )Frequency 4.0-13.0MHZ
- AI MPTEE Mini** 48 elements transesophageal (Pediatric) Frequency 4.0-13.0MHZ



## Technical Specifications

<b>B - Mode</b>	Gain 0-255 Depth: 32.9 cm Max ( According probe used ) Zoom: Max . = 10 TGC : 8 Controls Slide Inversion: Left / Right / Up / Down Mode: 2B & 4B Focus : Up to 12 , Lapse Adjustable focus	Frequency : 5 EasySteps U - Scan: Adjustable Dynamic Range: 20-280 dB (According probe used) GSC 7 selectable stages , 0-255 Sec . Width adjustable position B side image. Power: 1-100 % Changeable			
<b>3D/4D Imaging</b>	3 Simultaneously arbitrary sections Display Mode: Dual Display Quadruple Screen Full Screen 2D Full Screen 3D Full Screen 4D Rotation: X / Y / Z Movement: D / A -A Auto Rotation: 45, 90, 180, 270.360° Adjustable. Capacity: 0-255 Ouset Adjustable - Adjustable 0-255 Pending	Z scale: Adjustable Z angle: 10-170 ° Adjustable Map of Color: 4 Types Multi-Slice: Ref A, Ref B, Ref C Cutting Space: 0.5-2.0 Adjustable Scanning Angle: 20-75 degrees Image Quality: High, Medium, Low 4D Gain: Adjustable Freq. Image: 5 frames / sec or more			
<b>Capacity of image and Film</b>	Image storage in real time single / dual Static and Dynamic Archived image can be viewed on PC Audio Player Doppler Cinema	Cine Loop: 10000 frames or more Film Loop Time: 60 seconds or more (> = 500 frames per film)			
<b>DICOM Display signal Physiologic</b>	ECG , Pulse Wave ECG Gain: Adjustable ECG Position: Adjustable ECG Inverted: On /Ou	R- Timer: On /Ou Trigger Delay : Adjustable Frame Count : Adjustable			
<b>User Interface Keyboard</b>	Keyboard abbreviation integrated Recording keys for remote control peripherals and devices DICOM 5 active ports for connecting transducers	8 TGC -Slots Integrated Function Key External keyboard			
<b>Character and Icon</b>	Entry Area : ID , Name, Date, Birth , Gender , Height , Weight, Last menstrual period. Body mark : 52 Types				
<b>Optional Probe</b>	Phased Array Probe ( Cardiology) Linear Probe ( Vascular Small-Parts ) Curved Prove (Abdomen, OB/GYN)	Micro - Curved Probe (Transvaginal) Micro - Curved Probe (Cardiologia) Linear Surgical (Surgery)			
<b>Measurements</b>	General Measurements Color Mode B – Mode M - Mode 4D - Mode Spectral Doppler  Obstetrical / Gynecological Measurements B - Mode  Pulse - wave mode TEI Index	Cardiac Measurements B – Mode M – Mode Pulse _ Wave Mode Vascular Measurements Urologic Measurements  Small Parts Measurements Orthopedic Measurements  IMT Measurements			
<b>Environmental Requirements</b>	Temperature: +10 to +40 ° C Relative Humidity: 30 % to 75 % (non-condensing) Atmospheric Pressure: 700 to 1060 hPa				
<b>Applications</b>	Anesthesia Cardiology	Gynecological and Obstetric Musculoskeletal	Vascular Urology	Small Parts Pediatric	Orthopedic Interventional ultrasound
<b>Scaning Method</b>	Probe Curve: 70 ° or more	Phased Array Probe : 90 ° or more	Probe Micro - curve: 193 ° or more		
<b>DICOM Network Communication</b>	Storage: Directly transmits images with patient information to the DICOM file server. Print: Images can be printed directly using a DICOM compatible printer. DICOM Storage Commitment, DICOM Worklist, DICOM MPPS, DICOM Q/R Medical digital images and communication DICOM 3.0 interface.				

## Technical Specifications

<b>Exploration Mode</b>	4D image Biplane probe Color Mmode TDI mode CW mode	Eco Stress 2D panoramic images Panoramic images influx Color mode Elastography images Biopsy specialized guide
<b>Image Mode</b>	Adjustable Gain 1-255 Depth: 42.9cm Image Zoom (0.8 to 10 times) TGC: 8 control levels Inversion Image: Left, Right, Up and Down Panoramic image Composite image: Ou, 1, 2 adjustable Focus: Up to 12, range Adjustable Focus (depending on the probe) Frequency: 5 adjustable bands Chromatic: 13 selectable types Adaptive image fusion: 15 selectable types U-Scan: 0, 2, 3, 7 and 11 adjustable	Line Density: 3 adjustable levels (High - medium-low) Persistence: 0-95 selectable Biopsy Guide Function: On / Ou Guide biopsy adjustable angle Dynamic range: 20-280 (depending on the probe) Grayscale curve 7 selectable Image width and position: adjustable Power: 1-100 adjustable, one step at Tissue Acoustic : 400-1700 LGC: adjustable gain in the left / right side Trapezoid image on and off ( linear array probe ) Direction Mode B M- Tuning
<b>Flow Mode Colour (CFM) / Mode Doppler Tissue(TDI)</b>	Gain 0-255 Frame Rate : 2,3,4,5,7 MHz Frequency range: 5 Stages Size and position of ROI colors : Adjustable Auto Focus ( number of focus : 1 ) Inversion: up / down , left / right Reverse flow : On / Ou Frequency range: 5 stage adjustable Filtering Wall : 25-750Hz (depending on the probe) PRF : 0.5 to 12 KHz	Line density : 4 types (Low / medium / high / high -Max ) Color/Direction energy: 11 selectable types by Color Doppler , and 4 types selectable by Doppler Tissue Color Adjustment baseline : ± 15 levels Persistence: 0-80 (depending on the probe) Rejection B: 0-255 adjustable Linear deflection angle : 0, ± 16 , ± 20 adjustable Flow Color: Available in frozen mode M -tuning
<b>M - Mode</b>	Orientation M: 3 sample lines, Display frame rate Video Inversion (On/Off) Chroma: 5 types Display Format: H1/2, H1/4, V1/3, V1/2, V2/3, O1/4 Scan Speed: 6 levels adjustable	M Processing: Switch between average and peak values Power: 30-100 adjustable Color Modo-M: displays both color flow and M mode Inverse Video: off and on Inversion: up and down
<b>Spectral Doppler</b>	Pulse Wave Doppler (PWD) Continuous Wave Doppler (CWD) Sample Size PW Doppler: 1-20 mm Modifiable 1 mm Update 2D: On / Ou Invert Video: On / Ou Mode: 2B Audio Volume: 0-100 Adjustable Filter: 50-1000Hz (PW and CW) Angulo: 0-80 degree Auto real-time tracking	Vertical Shift: Available up to 17 phases Frequency: 5 phases PRF Adjustable: PW 1 to 16 KHz - CW 1-48 KHz Maximum Speed Range: PW 0.0007-18.2 m / s – CW 0.0012-61.4 m / s Scanning Speed: 2,4,6,8 Seg / Plano Power: 30-100 % Changeable Dynamic Range: 10 selectable stages Display Format: H1 / 2 , H1 / 4 , V1 / 3 , V1 / 2 , V2 / 3 , O1 / 4 Steering Angle: 5 Types (Probe Linear) Max. ± 20 Degrees, 0, ± 16 / ± 20 Modifiable.
<b>Functions Report</b>	Obstetrics Report / Gynecology Report Cardiac Function Vascular Report	Urology Report Small Parts Report IMT Report
<b>Data Management System</b>	Memory capacity hard drive : 500 GB Storage media : 5 USB Drive or DVD VGA Output	
<b>Physical Specifications</b>	997mm (L) x 684mm (W) x 1517mm (H) 4-identical probe connectors, 1 pencil probe connector  19" monitor, anti-flickering with LED backlight can be vertically or horizontally swiveled. 13.3" Ergonomic second display touch screen	Weight: approx. 150kg 5 probe holders

2018 Advanced Instrumentations Inc., is a U.S.A registered company – All rights reserved.

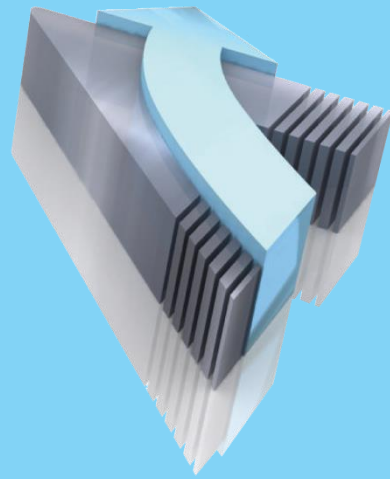
All functionality, features, specifications and other product information provided in this document including, but not limited to, the benefits, design, pricing, components, performance, availability, and capabilities of the product are subject to change without notice or obligation. Advanced Instrumentations reserves the right to make changes to this document and the product described herein, at any time, without obligation on Advanced Instrumentations to provide notification of such change. Actual description and specification of the product in this document may be different. Images shown here are for representational purpose only, actual may vary.

Advanced and Advanced Instrumentations trademarks and logos shown are property of Advanced Instrumentations Inc.

Advanced Instrumentations Inc.  
Success Through Quality,  
a Company You Can Trust

Advanced Instrumentations manufactures leading medical technology equipment in the areas of anesthesia, cardiology, operating room, gynecology and obstetrics, IV therapy, patient monitors, hospital furniture, neonatology and ultrasound. We deliver to the healthcare industry the highest-quality standards, reliability, and patient safety in all our products through effective, and rigorous testing procedures by our own department of Biomedical Engineering in the United States. All of our equipment comes with 2 years warranty and excellent post-sale support services.

Advanced Instrumentations Inc. Complies with the requirements of the ISO standards 9001: 2008 and 13485-2003 following the audit by one of the most prestigious global certification companies, as it is TÜV SÜD America. We comply with the requirements and are audited by the US Food and Drug Administration (FDA) an entity of the health and Human Services of the United States of America. These certifications are the result of dedication and commitment to excellence in our products and services.



6800 N.W. 77 Court,  
Miami, FL 33166  
U.S.A.  
Phone: 305-477-6331  
Fax: 305-477-5351

Distributor:



**DELTA PLUS (PVT) LTD.**  
H # 220, STREET # 13  
Khayaban-E-Kashmir  
G-15/4, Islamabad , Pakistan  
TEL+92(51)2160155-6  
FAX: +92(51)2160157  
info@deltapluspvt.com  
URL: [www.deltapluspvt.com](http://www.deltapluspvt.com)